

Ext. Dimensions				Order Code	Price Each				
H	W	D	Weight		1+	5+	10+	25+	
300	200	150	3.5	470-4230	3,572.00	3,434.00	3,400.00	--	
300	300	150	4.5	470-4241	3,811.00	3,665.00	3,628.00	--	
300	300	200	5	470-4253	4,008.00	3,855.00	3,816.00	--	
400	300	150	6	470-4265	4,209.00	4,047.00	4,007.00	--	
500	300	200	9	470-4277	5,877.00	5,651.00	5,594.00	--	
300	400	150	6	470-4289	4,209.00	4,300.00	4,258.00	--	
400	400	200	8	470-4290	5,152.00	4,954.00	4,904.00	--	
500	400	200	11.5	470-4307	6,341.00	6,098.00	6,036.00	--	
500	400	250	12	NEW 871-4398▲	6,259.00	6,029.00	5,970.00	--	
600	400	200	13.1	NEW 871-4401▲	5,860.00	5,770.00	5,710.00	--	
600	400	250	14	470-4319	7,062.00	6,790.00	6,722.00	--	
500	500	250	14.5	470-4320	8,511.00	8,184.00	8,103.00	--	
400	600	250	13.5	470-4332	7,144.00	6,870.00	6,801.00	--	
600	600	250	19.5	470-4344	9,465.00	9,101.00	9,010.00	--	
600	800	300	30.5	NEW 871-4410▲	10,642.00	10,064.00	9,561.00	--	
800	600	300	33.25	NEW 871-4428▲	10,642.00	10,064.00	9,561.00	--	
Locking Handle					871-4436▲	252.00	236.00	222.00	215.00
Wall fixing lugs x4					470-4356	464.00	429.00	425.00	--

Terminal Boxes - 'EB'

IP66, Steel



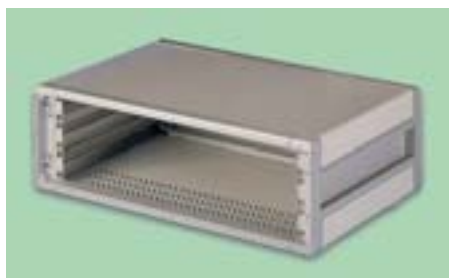
- Compact enclosures with hinged door/lid. Finished in Grey RAL7035
- Supplied with quick fit steel mounting plate
- Integral cam lock provides protection in accordance with VDE 0660 Pt 500
- Protected to IP66 EN60529/10.91
- CSA, TUV, Germanischer Lloyds, Lloyds Register of Shipping approved, UL listed

203410

H	W	D	Mftrs. List No.	Order Code	1+	10+	50+
150	150	80	EB1551	119-8759●	2,221.00	2,117.00	1,986.00
300	150	80	EB1545	119-8753●	2,330.00	2,220.00	2,083.00
200	200	80	EB1546	119-8754●	2,289.00	2,182.00	2,047.00
300	200	80	EB1552	119-8760●	2,632.00	2,509.00	2,354.00
400	200	80	EB1547	119-8755●	2,836.00	2,702.00	2,534.00
150	150	120	EB1553	119-8761●	2,382.00	2,267.00	2,127.00
300	150	120	EB1548	119-8756●	2,389.00	2,277.00	2,137.00
200	200	120	EB1549	119-8757●	2,365.00	2,253.00	2,114.00
300	200	120	EB1554	119-8763●	2,743.00	2,614.00	2,453.00
400	200	120	EB1550	119-8758●	2,910.00	2,773.00	2,602.00
300	300	120	EB1555	119-8764●	3,063.00	2,917.00	2,737.00
400	300	120	EB1556	119-8765●	3,413.00	3,249.00	3,048.00

19" Rack & Eurocard Frames

19" Instrument 'Diplomat'



- Assembled cases for direct mounting of 482.60mm (19") Sub-racks and chassis
- Conform to IEC297-1 and DIN41494
- Quick release top and bottom covers
- Optional front trims conceal 482.60mm (19") fixings

NOTE: Chassis supports must be ordered when fitting a chassis tray

203452

Height	Depth	Mftrs. List No.	Order Code	1+	5+	10+	+
Cases							
3U	422	760-236563B	160-076	10,301.00	9,827.00	9,434.00	--
4U	422	760-236566G	160-088	11,170.00	10,659.00	10,871.00	--
6U	422	760-236569A	160-090	13,636.00	13,009.00	12,488.00	--
9U	522	760-236572A	160-106	18,672.00	17,814.00	17,103.00	--
Anodised Aluminium Front Panels							
3U	-	60-39268L	160-118	1,428.00	1,364.00	1,309.00	--
4U	-	60-39269G	160-120	1,747.00	1,667.00	1,601.00	--
6U	-	60-39270E	160-131	2,508.00	2,394.00	2,442.00	--
Front Bezel Trims							
3U	-	760-236865H	160-143	527.00	501.00	483.00	--
4U	-	760-236866F	160-155	561.00	536.00	546.00	--
6U	-	760-236867D	160-167	684.00	655.00	627.00	--
9U	-	760-236868B	160-179	971.00	--	--	--

Height	Depth	Mftrs. List No.	Order Code	1+	5+	10+	+
Ventilated Rear Panels							
3U	-	760-236872L	160-180	816.00	779.00	750.00	--
4U	-	760-236873J	160-192	988.00	942.00	905.00	--
6U	-	760-236874G	160-209	1,163.00	1,110.00	1,131.00	--
9U	-	760-236875E	160-210	1,344.00	1,281.00	1,232.00	--
Chassis Supports - PK 2							
3U, 4U, 6U	-	60-43797D	160-222	659.00	627.00	641.00	--
9U	-	60-43798L	160-234	706.00	672.00	646.00	--
Chassis Tray							
3U, 4U, 6U	-	60-43803D	160-246	2,012.00	1,920.00	1,844.00	--
9U	-	60-43804L	160-258	2,109.00	2,012.00	1,932.00	--

19" Rack Case



- Robust steel construction
- Design consists of integral base and sides
- Optional front, rear, top panels and handles
- Base of unit available vented or unvented
- Top cover vented as standard
- Anodised aluminium front panel, other panels painted light grey (RAL7035)
- Conforms to IEC-297-1, DIN41494.

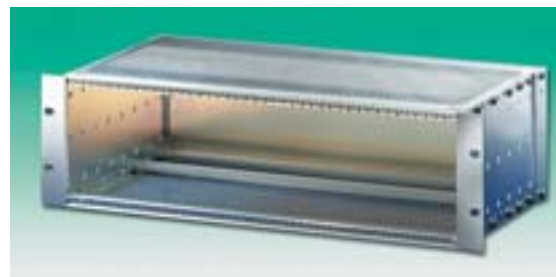
218849

H	D	Mftrs. List No.	Order Code	1+	5+	10+	25+
Vented Bases							
1U	250	503-232945C	644-470	1,905.00	1,834.00	1,712.00	--
2U	250	503-232947K	644-481	2,178.00	2,105.00	1,964.00	--
2U	350	503-232953D	644-493	2,534.00	2,437.00	2,275.00	--
3U	250	503-232949F	644-500	2,503.00	2,407.00	2,268.00	--
3U	350	503-232955L	644-511	2,939.00	2,764.00	2,580.00	--
Unvented Bases							
1U	250	503-232946A	644-523	1,878.00	1,806.00	1,688.00	--
2U	250	503-232948H	644-535	2,158.00	2,076.00	1,939.00	--
2U	350	503-232954B	644-547	2,481.00	2,387.00	2,230.00	--
3U	250	503-232950K	644-559	2,474.00	2,380.00	2,226.00	--
3U	350	503-232956J	644-560	2,765.00	2,672.00	2,496.00	--
Rear Panels							
1U	-	503-232984D	644-572	642.00	618.00	577.00	--
2U	-	503-232985B	644-584	688.00	662.00	620.00	--
3U	-	503-232986L	644-596	732.00	708.00	660.00	--
Anodised Front Panels							
1U	-	503-232971B	644-602	835.00	803.00	751.00	--
2U	-	503-232974G	644-614	1,084.00	1,044.00	976.00	--
3U	-	503-232977A	644-626	1,316.00	1,044.00	1,296.00	--
Vented Top Covers							
250	-	503-232963A	644-638	946.00	911.00	882.00	--
350	-	503-232965H	644-640	1,036.00	995.00	983.00	--
Grey Handles (Set of 2)							
				1+	5+	10+	25+
1U	-	503-232979H	644-651	490.00	472.00	440.00	450.00
2U	-	503-232981K	644-663	588.00	566.00	561.00	542.00
3U	-	503-232983F	644-675	633.00	611.00	569.00	580.00

19" Subracks, europac PRO, Shielded



3U, 84HP



- Available in two rack depths
- Typical shielding of 40 dB @ 1GHz, providing the front is enclosed with shielded front panels
- Increased stability through strengthened horizontal rails, shock and vibration proof to IEC 61587-1
- Material/Colour/Finish
- Horizontal rails, 19" mounting flanges and rear corner anodised aluminium extrusion
- 2mm aluminium side panels
- 2.5mm rear panel, visible surfaces are anodised
- 0.8mm cover plate, perforation \varnothing 4mm, airflow 60%
- All contact surfaces are electrically conductive
- Standards
- IEC 60297-3 / DIN 41 494-5
- Earthing to IEC / EN 60950

13

Enclosures, Boxes & Fasteners

Compliant
Non-compliant
+ Limited stock - RoHS replacement available
RoHS